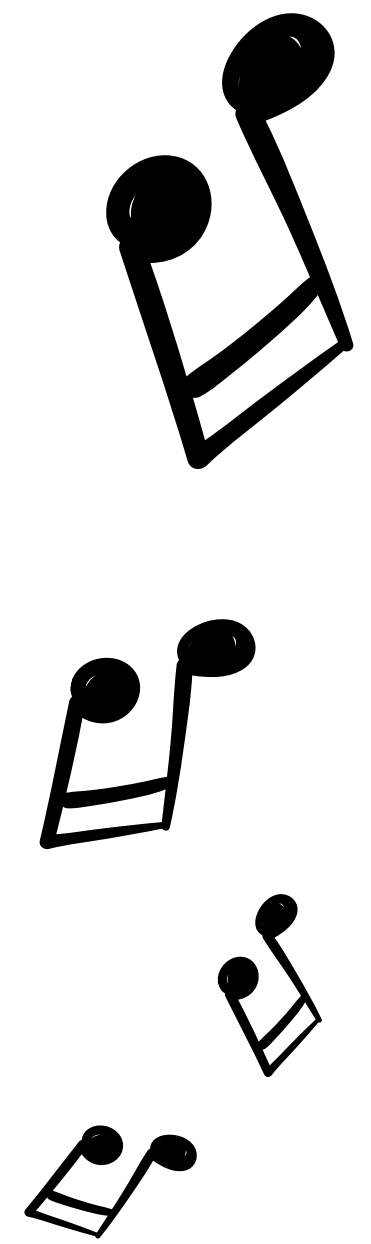
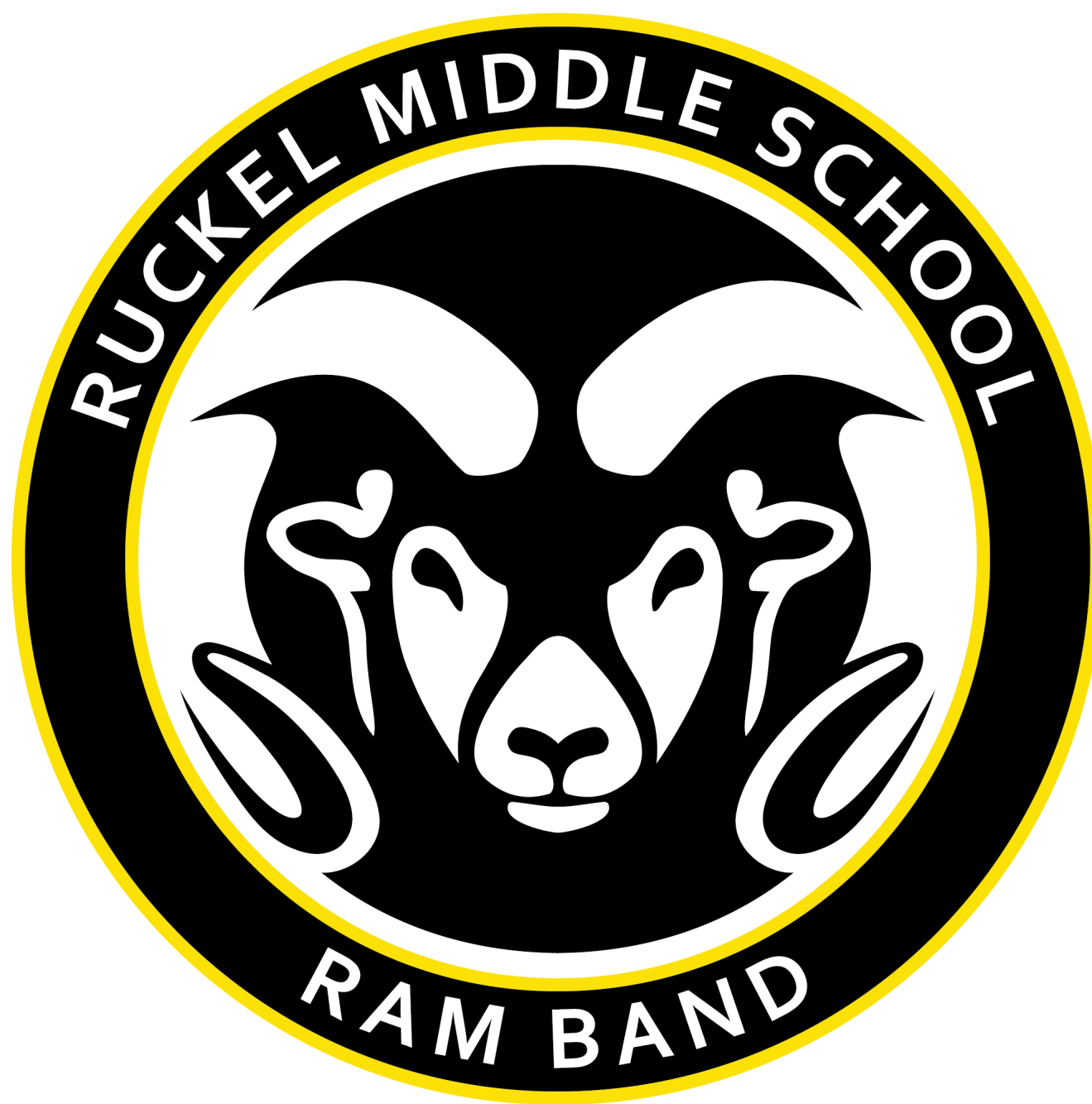




ALL ARE WELCOME - NO EXPERIENCE NECESSARY!

# Join the C.W. Ruckel M.S.

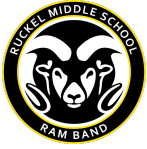


# *Ram Band*

QUESTIONS? Email [Emilia.Tenore@OkaloosaSchools.com](mailto:Emilia.Tenore@OkaloosaSchools.com)!



[www.RuckelBand.com](http://www.RuckelBand.com)



## Instrument Fitting Dates

2024-2025

Dear Current and Future Ruckel Families,

We would like to invite your student to join the **Ram Band!**

This decision will set you on a journey of lifetime music-making! Band is a wonderful opportunity for students to make lifelong friends, perform and travel across the world, and possibly earn college scholarships. In the Ram Band, one of our primary goals is to ready students for the next level of performance in the **Eagle Pride** at Niceville High School. Beginning Band is where it all steps off! If you are interested, your next step is to make plans to attend one of our instrument selection events:

### 5<sup>th</sup> Grade Band & Beginning Band Instrument Fitting Events

Location: Ruckel Band Room

Percussion Tryouts (rising 6 <sup>th</sup> -8 <sup>th</sup> grade only)	Tuesday, April 9 <sup>th</sup> , 2024	5 – 7 PM
Woodwind/Brass Instrument Fitting #1	Tuesday, April 16 <sup>th</sup> , 2024	4 – 7 PM
Woodwind/Brass Instrument Fitting #2	Tuesday, May 7 <sup>th</sup> , 2024	4 – 7 PM

Please plan to attend an instrument fitting event so that your student may be fitted for their instrument and placed into the appropriate Beginning Band class. Students will try every instrument offered in our program before final selection. Percussion is held on a separate day because the screening process takes a bit longer than woodwind and brass instruments. *Percussion is only available for 6<sup>th</sup>- 8<sup>th</sup> graders.* There is a limit on the number of students that can play each instrument - percussion in particular. The screening process should only take about 30 minutes, and you may come any time during the above listed hours. If you are unable to attend on any of the above days, please contact me at:

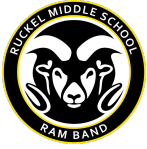
**[Emilia.Tenore@OkaloosaSchools.com](mailto:Emilia.Tenore@OkaloosaSchools.com)**

When your child enters the world of middle school, many doors open. Students will choose **two** elective classes as part of their daily schedules for next year. Besides being a fun new activity, band teaches many important life skills such as teamwork, individual responsibility, and goal setting. As we prepare for this new year at Ruckel Middle School, I welcome your student's participation in the **Ram Band!**

Sincerely,

*Emilia Tenoré*

Band Director  
Ruckel Middle School



## Frequently Asked Questions

## Ruckel Band

### Q. How do I know what instrument I will play?

A. Students will be invited to try making some sounds on several different instruments, and the band director will help each student make a final selection. This decision is based on student preference, initial aptitude, and the number of different instruments needed to get a full sound when the entire band plays together. We are usually able to accommodate each student's first or second choice. The goal is to try to put each child on an instrument where he/she will have success while keeping the overall instrumentation balanced.

### Q. How do I obtain an instrument once I know what I will play?

A. Most instruments are supplied by the student/parents. Area music stores offer a variety of affordable rental/purchase plans that will fit each family's budget. Most instruments can be rented for less than the cost of a daily soda. The band director will supply each family with helpful information in this area. Used instruments are also a possibility if they are high-quality instruments. For your protection and peace of mind, the director should always be consulted before you buy a used instrument. The school also owns a few instruments that are available for a yearly maintenance fee. Availability for beginners depends on use by upperclassmen. These instruments are tubas, euphoniums, french horns, bassoons and oboes.

### Q. How much time after school is required?

A. During the first year, there is minimal after school commitment for students. There will be two required performances during the school year, which will take place during the evening. 2<sup>nd</sup>, 3<sup>rd</sup>, and 4<sup>th</sup> year band students will have a few after school rehearsals and several performances in the form of football games and evening concerts.

### Q. Can I be part of other school activities?

A. Yes! Band students are often among the most involved students on campus. Many students who make the honor roll at Ruckel are in the band, and we have band members who are involved in every activity and sport offered at our school. While band members are expected to attend all rehearsals and performances, as we work with coaches and sponsors at RMS to coordinate activities. To plan and avoid conflict, our band calendar is on the website, [www.RuckelBand.com/calendar](http://www.RuckelBand.com/calendar)

### Q. Can I play a band instrument with braces?

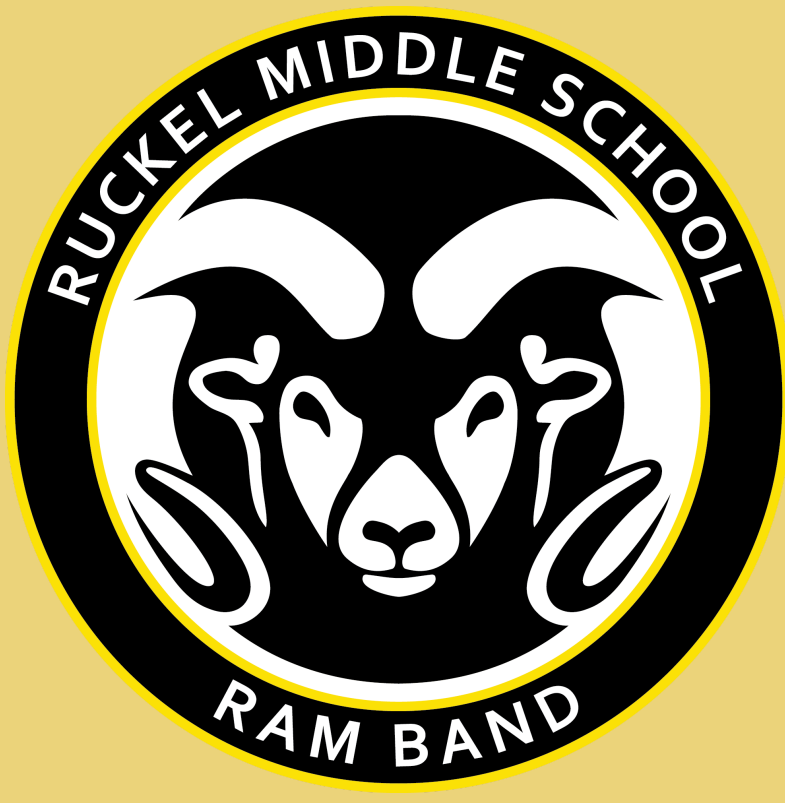
A. Yes! We have many students who wear braces in the band playing almost every instrument. Sometimes there is a short period of adjustment when students first get braces, but after that, most students have no problems.

### Q. How do I sign up for band?

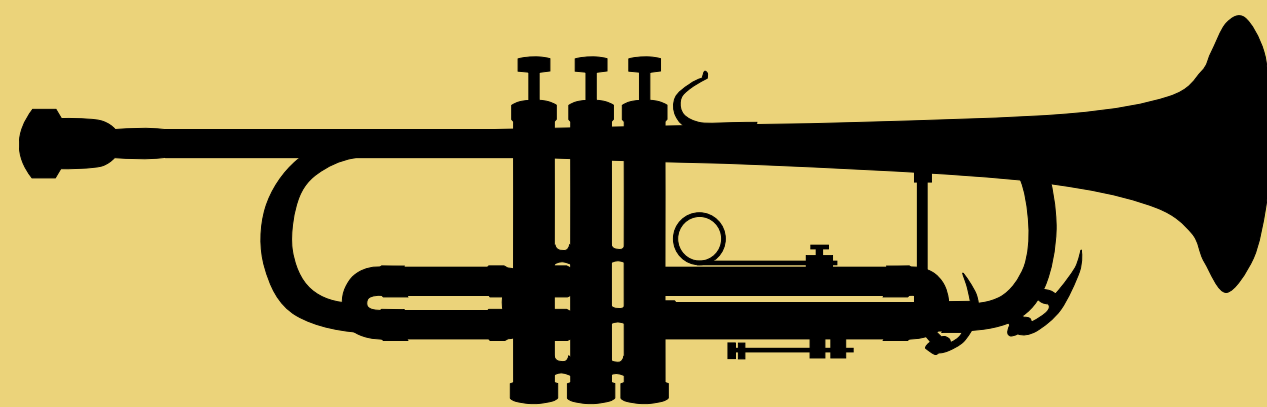
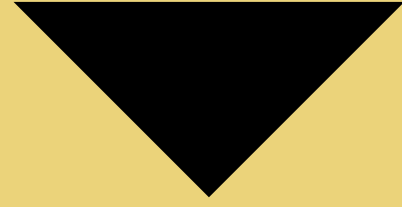
A. Rising 6<sup>th</sup>-8<sup>th</sup> grade students who want to join band should mark a number 1 or 2 by *Band 1* on the registration form. We will ensure that students make it into the band if they request it. You may also find a link on our website to add your name to next year's band list. If you are concerned, email Mrs. Tenoré.

#### 1 Band 1 (1302000)

Students interested in 5<sup>th</sup> Grade Band will not be given this same registration form. Rising 5<sup>th</sup> graders can sign up for 5<sup>th</sup> grade band on our website and by attending one of the Woodwind/Brass Instrument Fittings.



**SCAN ME**



[www.RuckelBand.com](http://www.RuckelBand.com)